

## Instructions for assembly Camber axle

How to assemble your camber axle:

1. Lay the chassis on its 'back', with the underside of the frame facing upward.
2. Place the clamp (3) and mid section (4) around the back axle (1) on both sides. Place this whole section on the longitudinal tube of the chair.
3. You then take the clamp (2) and place it around the longitudinal tube from underneath, adding the washers (6) and bolts (5).
4. Screw in the bolts loosely to enable you to move the axle in both a longitudinal and transversal direction.

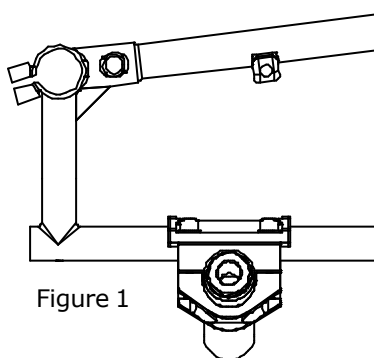


Figure 1

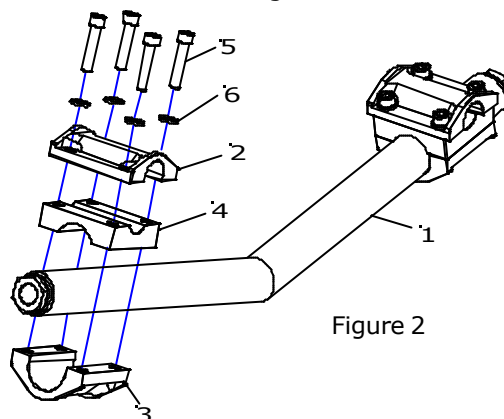


Figure 2

5. The next step is to adjust the camber axle to achieve the correct balance. There are three points which are important if this is to be done well:

- Make sure that the axle sticks out the same amount on both sides. (This can be checked by measuring with a ruler or tape measure).
- The distance between the clamps and the back end of the longitudinal tube should be the same on both sides. (This can be checked by measuring with a ruler or tape measure.)
- The edge of the centre of the back axle should point straight down to the ground, it should not point forwards or backwards.

6. When these things are correctly adjusted you can tighten the bolts securely.

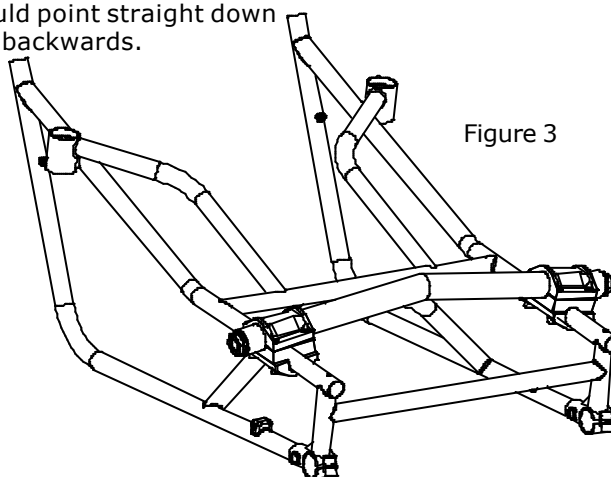


Figure 3